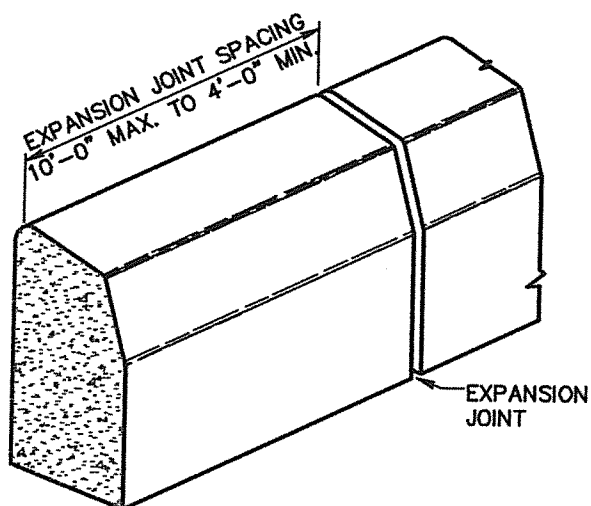


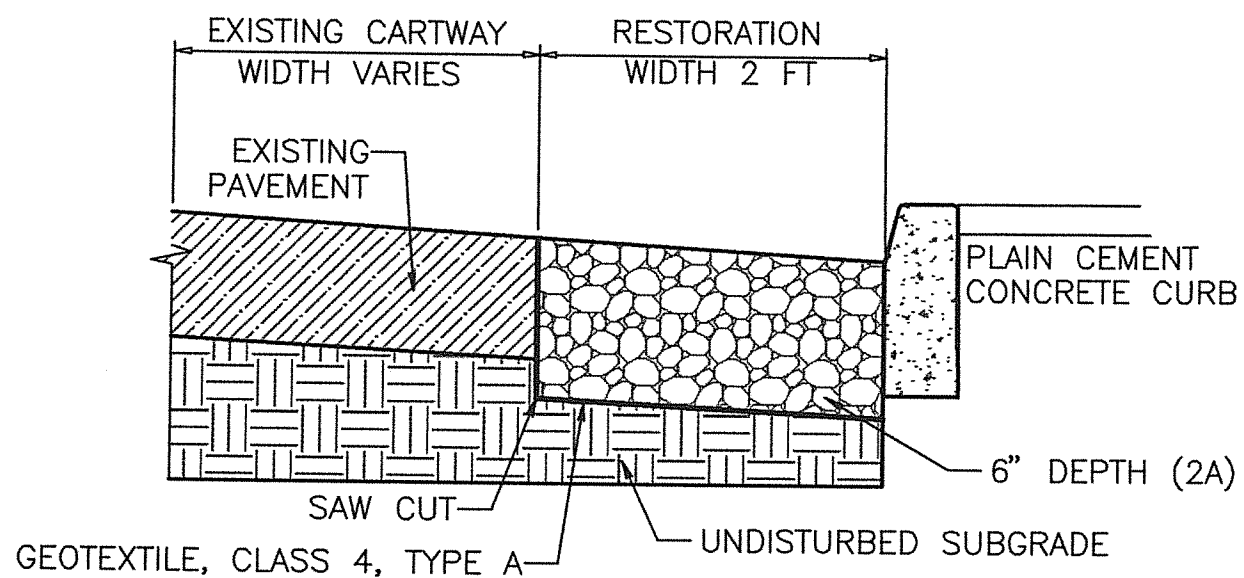
**TYPICAL CROSS SECTION**



- NOTES:
1. CURBING SHALL BE BUILT IN 10' LENGTHS AND AN APPROVED EXPANSION JOINT OF 1/4" MIN. THICKNESS FILLED WITH PREFORMED BITUMINOUS EXPANSION JOINT FILLER MATERIAL INSTALLED FLUSH WITH TOP AND FACE OF CURB SHALL BE USED AT EACH JOINT.
  2. ALL CONSTRUCTION AND MATERIALS TO BE IN CONFORMANCE WITH PENNDOT FORM 402.

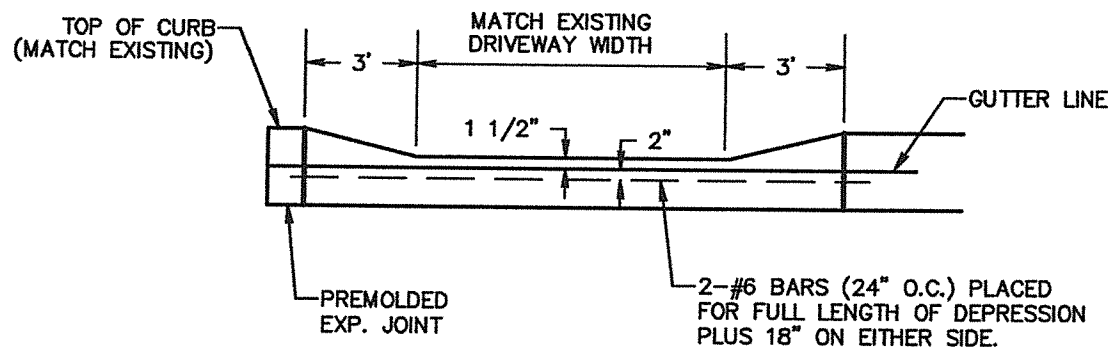
**PLAIN CEMENT CONCRETE CURB**

Not To Scale



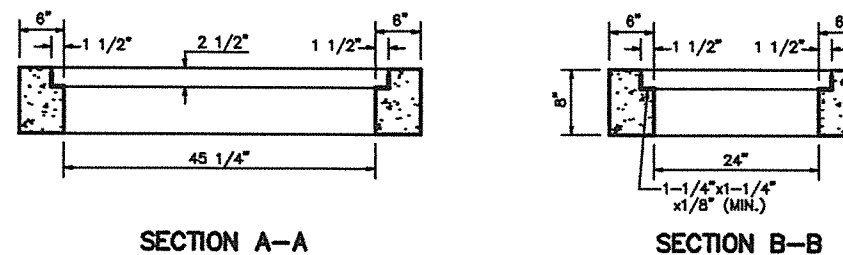
**CURB REPLACEMENT**

PRIOR TO ROADWAY RECYCLING  
NOT TO SCALE



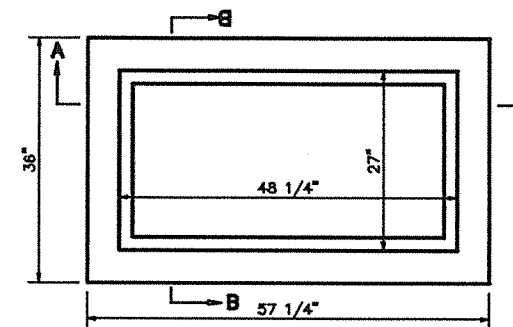
**CURB DEPRESSION AT DRIVEWAY**

NOT TO SCALE



SECTION A-A

SECTION B-B



PLAN VIEW

**TYPE 'M' INLET TOP DETAIL**

NOT TO SCALE

**2012 PAVEMENT PROJECT DETAIL SHEET**

TRAPPE BOROUGH, MONTGOMERY COUNTY, PENNSYLVANIA

**GILMORE & ASSOCIATES, INC.**  
ENGINEERING & CONSULTING SERVICES

184 MAIN STREET TRAPPE, PA 19428 (610) 489-4949 www.gilmore-assoc.com



SCALE AS NOTED

JOB NO.: 1204019T

DATE: 4/24/2012

SCALE: AS NOTED