

UPDATE

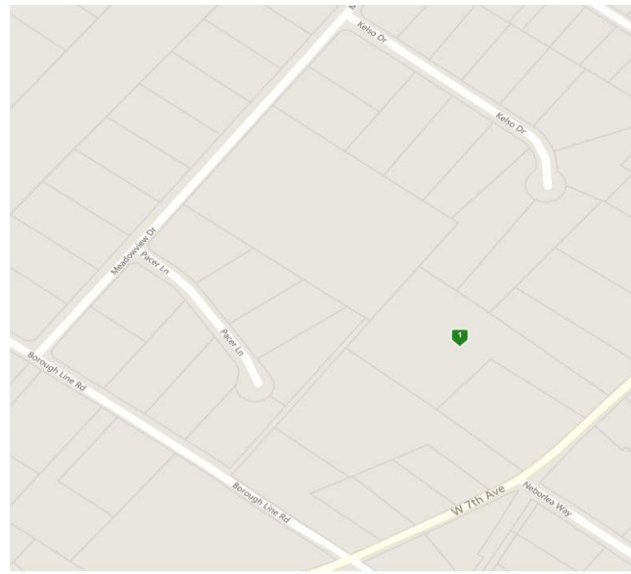
From Collegeville-Trappe Joint Public Works on Proposed Salt Storage Facility in Trappe Borough

May 26, 2018

The purpose of this UPDATE is to make you aware of a proposed salt storage facility being considered by Collegeville-Trappe Joint Public Works. We welcome your comments and questions.

BACKGROUND:

- The Boroughs of Collegeville and Trappe make every effort to ensure that the roads remain as safe as possible during extreme winter conditions and that salting, and plowing is performed in an efficient and effective manner.
 - The Boroughs request bids annually from qualified contractors for snow plowing and road salting services. These services include the cost of salt storage.
 - The number of contractors bidding over the past decade has dwindled to ONE. A major factor is our lack of on-site salt storage capability within the Boroughs.
 - If our present contractor, like our previous contractor, decides not to bid, the safety of our roads could be in jeopardy and we could be in an extremely perilous position facing extraordinarily high costs or limited salt supply.
- We believe having a local salt storage facility within our Boroughs will attract more contractors, leading to a competitive bidding environment.
 - A competitive bidding environment will minimize the local tax burden to residents in the future.
 - The Boroughs of Collegeville and Trappe, through Joint Public Works, are taking a proactive approach in communicating the need, providing a potential solution, and asking for your comments and feedback.



The location under consideration for a salt storage facility, identified above, is a flag lot adjacent to the compost site off West 7th Avenue in Trappe.

OPTIONS CONSIDERED:

1. Do Nothing	
2. Water Works Park	Too close to wellheads
3. Private Property and commercial sites in Collegeville and Trappe	No interest by Owners
4. East Seventh Avenue	Hill too steep
5. Iron Bridge Crossing	No Room
6. Public Works on West First Avenue	Too close to wellheads
7. Other Water Wellhead Properties	Too close to wellheads
8. Trappe Borough Hall	Too close to wellheads
9. Plowing Contractor Sites	Unpredictable, inefficient and costly
10. School District	Declined

SIMILAR STRUCTURE:



FACILITY DETAILS:

The property will include a building approximately 50 ‘ x 50 ‘.

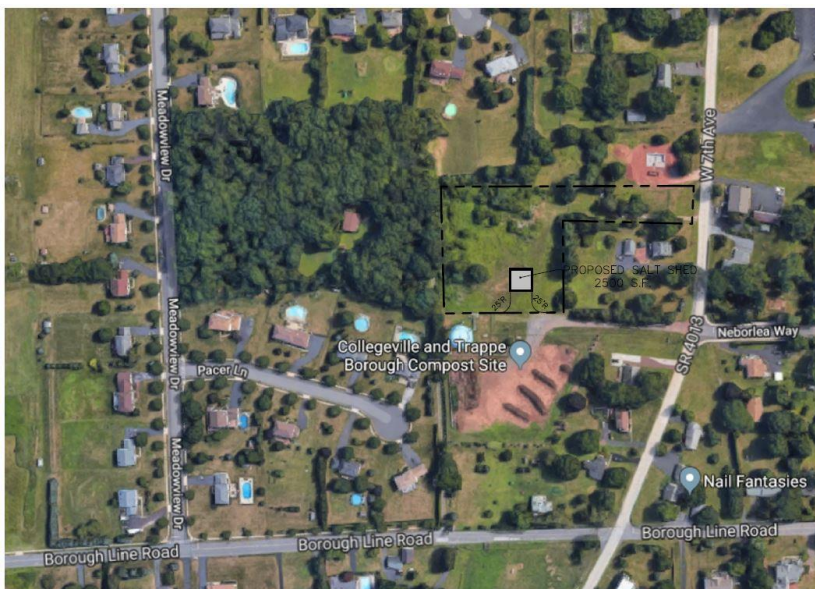
During most of the year (8 months) the property would be maintained but have little to no activity. Calculations based on 2017 and 2018 data indicate an average of 16 hours/month, during the winter months, when the facility would be accessed for salt retrieval. A closer look indicates an average of only 8 hours a month after 6pm.

The storage building would be constructed with superior sound qualities and landscaping consistent with adjacent properties.

NEXT STEPS:

Trappe Borough will discuss the details of the project at its June Council meeting at 7 pm on Tuesday, June 5. Residents are invited to participate in the public comment session of the meeting.

If you are unable to attend the meeting, please contact the Borough Manager with your comments or questions.



PRELIMINARY SALT SHED LA

CONTACT:

Tamara Twardowski
 Trappe Borough Manager
 610-489-7181
Borough.Manager@TrappeBorough.com